

# ▲ PEAKTRONICS

## POT-101

Command Potentiometer

The Peaktronics POT-101 is a panel mountable potentiometer that is well suited for providing a local control knob for various industrial controllers. The POT-101 has also been improved with the addition of three components and an adhesive backed dial plate, so the POT-101 is now designed to meet NEMA 4 requirements.

The POT-101 is particularly useful in providing a command input signal for the Peaktronics AMC/DHC/LRC/SVC series controllers, (see wiring diagram below). In these applications, the POT-101 is used to manually set the position for any actuator.

The POT-101 includes all necessary hardware with a dial plate that is scaled to 0 to 100. Also, the POT-101 features a terminal strip for easy wire terminations. Using a shielded cable, connect the shield to the signal ground terminal at the controller input.

The POT-101 can be located up to 50 feet from the controller. For distances more than 50 feet, it is recommended that a 4-20mA current loop is used. See MLT-101 for these applications.



## SPECIFICATIONS

### RESISTANCE

1K ohms  $\pm 10\%$

### POWER RATING

2 W @ 70°C

derated to 1.4 W @ 85°C

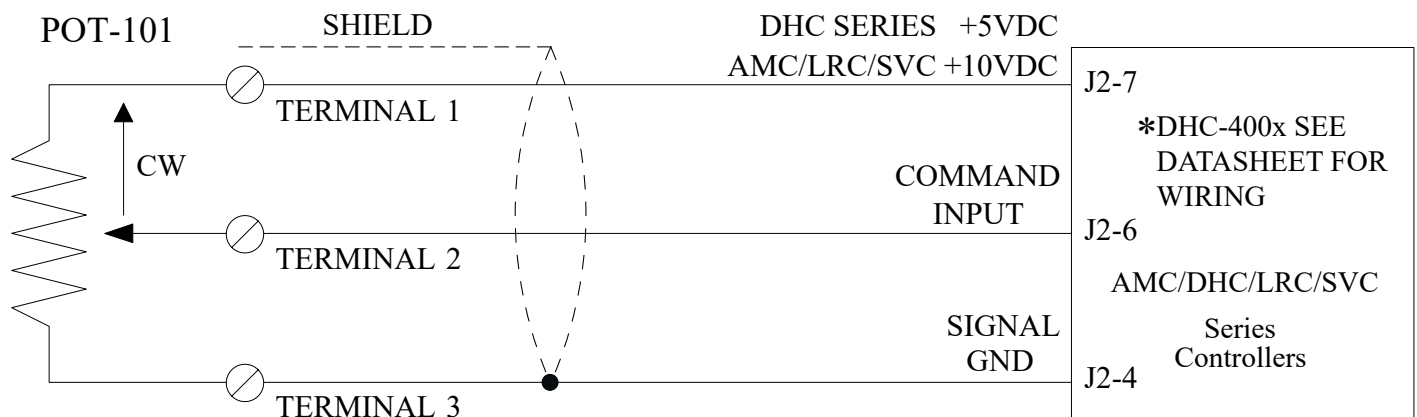
### MECHANICAL ROTATION

312°  $\pm 3^\circ$

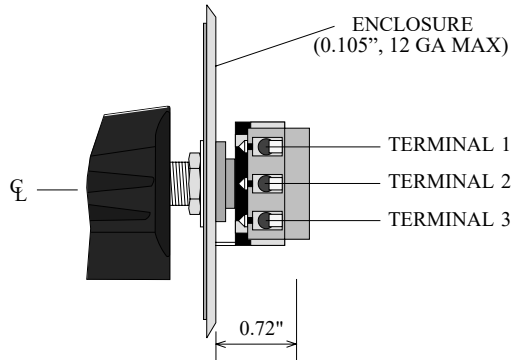
### OPERATING TEMPERATURE

-40°C to 85°C

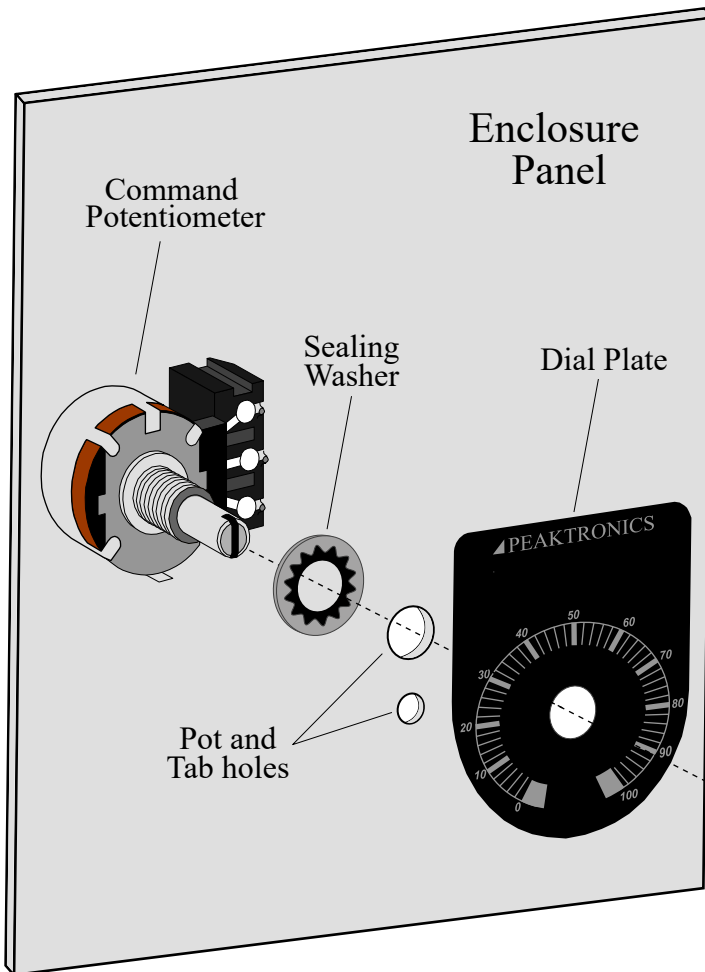
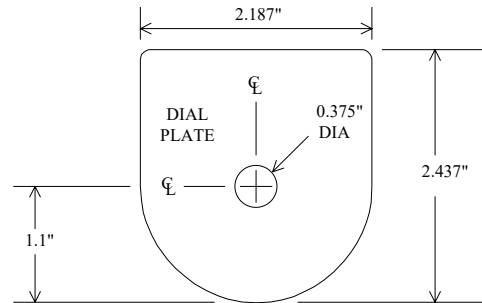
## WIRING DIAGRAM - TYPICAL



**SIDE VIEW**



**DIAL PLATE DIMENSIONS**



**DRILL TEMPLATE**

FRONT VIEW  
(ACTUAL SIZE)

